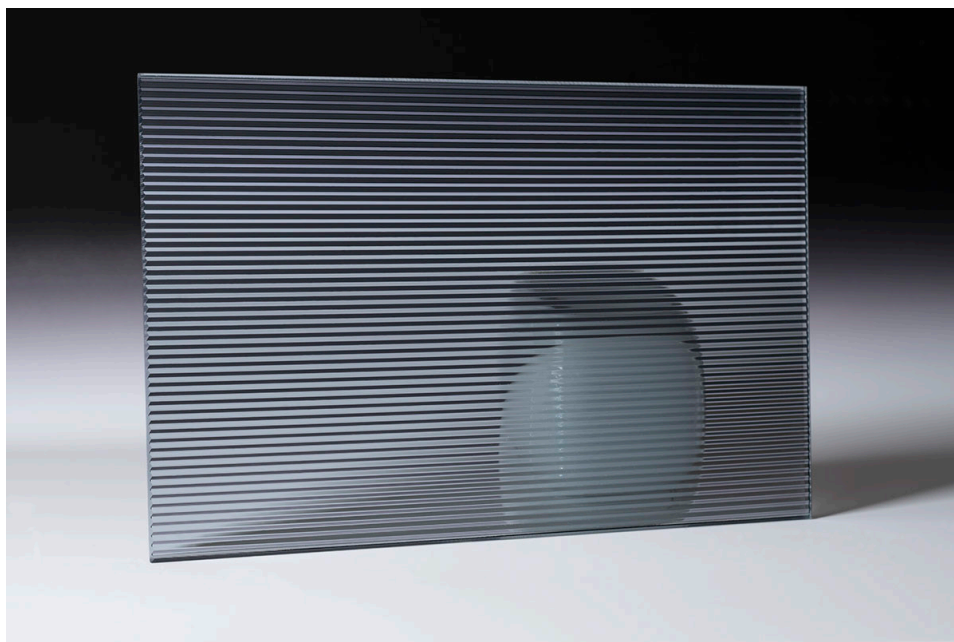


Mini Ribbed Gray Glass



Various types of industrially manufactured glass hold an important place in modern architecture. Along with excellent aesthetic and functional characteristics, one of the major advantages is the affordable price. We offer several types of industrial glass with different textures, known as ornamental glass. Ornamental glass, due to its surface, diffuses light and is decorative, making it perfect for partitions and interior design elements. In exterior applications, ornamental glass aesthetically enhances buildings and provides privacy in various architectural contexts.

max. dimensions: 3100 x 1550 mm

thickness: 8, 10, 12, 14 mm

safety treatment: laminated, tempered and laminate

processing options: drilling holes, cnc cutouts, shaping

applications: windows, doors, shower cabins, partitions

cleaning: Architectural glass can be cleaned with liquid cleaners and paper towels, or soft clothes. Liquid cleaners without ammonia are recommended. Avoid all abrasive cleaning materials.