

## Light Dots Black



dim. 300 x 200 mm

Our decorative antique mirrors are made by hand by applying metal to the surface of the glass in larger or smaller quantities. The models differ in the intensity and appearance of the antique effect that brings the desired style to your space. This unique collection will fit perfectly into interiors, for example hotel lobbies or rooms, bars or as a statement piece in any interior. Each mirror can be tempered or laminated, which can meet all safety or limiting conditions required by the project.

Glass panels are made by our artists, so each one is slightly different and unique.

max. dimensions: 3000 x 1500 mm

thickness: 4, 5, 6, 8, 10 mm

safety treatment: tempered, laminated, tempered and laminated

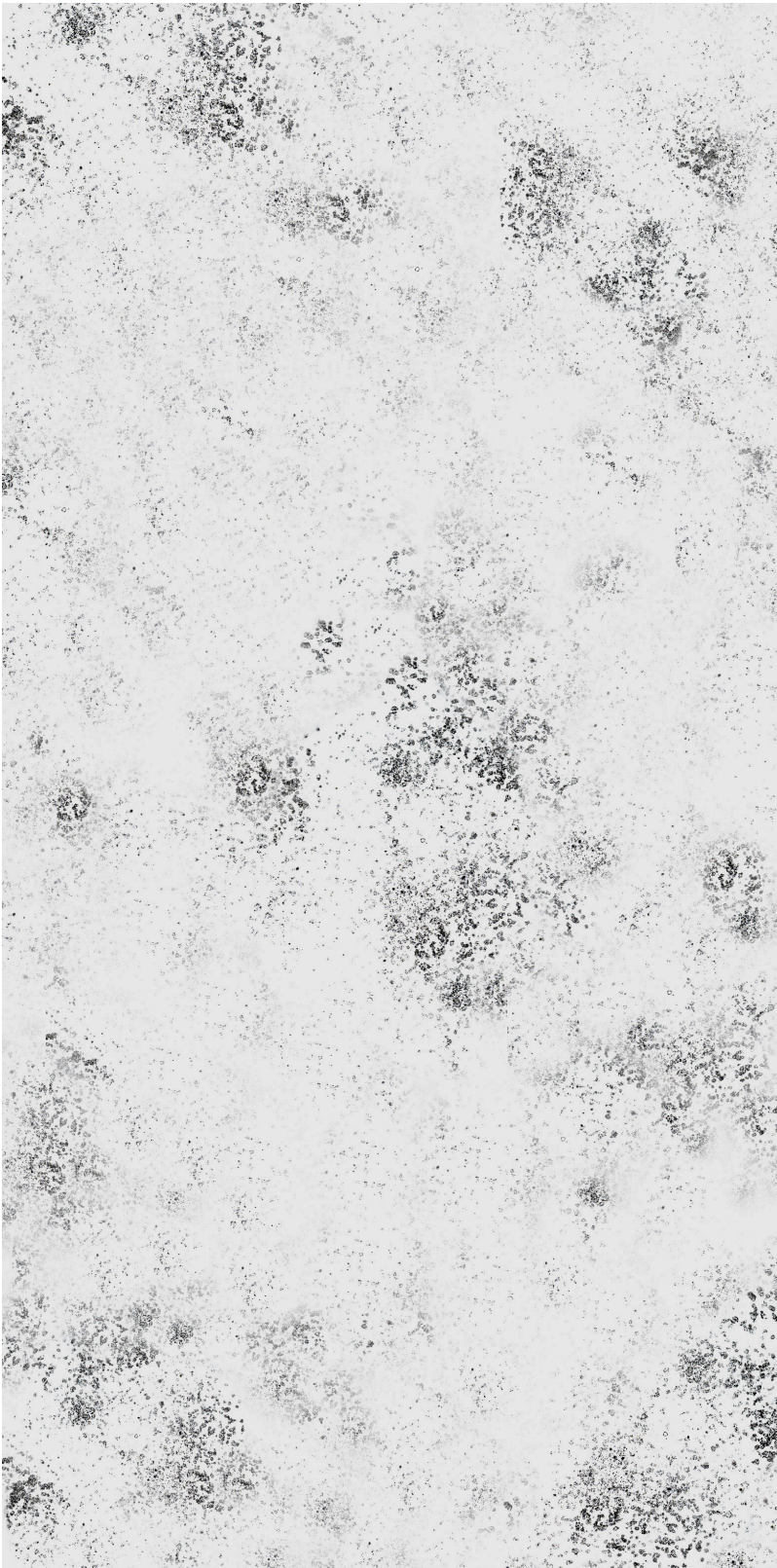
processing options: drilling holes, cnc, cutouts, shaping

applications: wall cladding, furniture cladding, bar decoration

cleaning: Antique Mirror can be cleaned with liquid cleaners and paper towels, or soft clothes. Liquid cleaners without ammonia are recommended. Avoid all abrasive cleaning materials.

**REMARK:** Due to the manual and unique method of production, certain differences from the shown sample are possible.

## Light Dots Black



**REMARK:** The example shown is illustrative. Due to the manual production method, each piece is unique..

dim. 3000 x 1500 mm

